

**"Title"**

**A RESEARCH PROJECT**

Submitted to the Board of Advanced Studies and Research

Dow University of Health Sciences

In partial fulfillment of the requirement

for the degree of

Master of Business Administration

(Health Management)

by

**Dr. ABC**



Institute of Health Management

Dow University of Health Sciences

Karachi-Pakistan

February 2015

**SUPERVISOR**

Dr. MUHAMMAD ATHAR MAJEED KHAN

DPH, DCPS-HCSM, DCPS-HPE, MBA DUHS-HM

## DEDICATION

I dedicate my work to.....

My late parents, for their unconditional love, untiring efforts and constant prayers  
for making me what I am today.....



## DECLARATION

*"I hereby declare that this submission is my own work & that, to the best of my knowledge & belief, it contains no material previously published or written by another person nor material which has been accepted for the award of any other degree or diploma of the university or other institute of higher learning, except where due acknowledgement has been made in the text".*

**Dr. ABC**

MPhil Trainee/Research Associate of Anatomy

Dow University of Health Sciences

*Signature* \_\_\_\_\_

Enrolment No. 07/2005/003

Date: 26<sup>th</sup> August, 2016

## CERTIFICATE

This is to certify that the project entitled "**ABC Title**" submitted by Dr. ABC to the Institute of Basic Medical Sciences, Dow University of Health Sciences, Karachi for the award of the degree of Master of Philosophy (Anatomy), is a bonafide record of the research work carried out by him under my supervision and guidance. The content of the project, in full or parts have not been submitted to any other Institute or University for the award of any other degree or diploma.

Supervisor:

Dr. ABC,  
Qualification  
Designation  
Department name  
Institute of Health Management,  
DUHS, Karachi

Date: 26<sup>th</sup> August, 2016

## CERTIFICATE

This is to certify that the project entitled "**ABC Title**" submitted by Dr. ABC to the Institute of Basic Medical Sciences, Dow University of Health Sciences, Karachi for the award of the degree of Master of Philosophy (Anatomy), is a bonafide record of the research work carried out by him under my supervision and guidance. The content of the project, in full or parts have not been submitted to any other Institute or University for the award of any other degree or diploma.

Co-Supervisor:

Dr. ABC,  
Qualification  
Designation  
Department name  
Institute of Health Management,  
DUHS, Karachi

Date: 26<sup>th</sup> August, 2016

## CERTIFICATE

This is to certify that the project entitled “ABC Title” submitted by Dr. ABC to the Institute of Basic Medical Sciences, Dow University of Health Sciences, Karachi for the award of the degree of Master of Philosophy (Anatomy), is a bonafide record of the research work carried out by him under my supervision and guidance. The content of the project, in full or parts have not been submitted to any other Institute or University for the award of any other degree or diploma.

**Programs Director:**

Dr. ABC,  
Qualification  
Designation  
Department name  
Institute of Health Management,  
DUHS, Karachi

Date: 26<sup>th</sup> August, 2016

## TABLE OF CONTENTS

ABSTRACT.....	i
Background .....	i
Objectives.....	i
Methods.....	i
Results .....	i
Conclusion.....	i
CHAPTER 1.....	1
1 INTRODUCTION .....	1
1.1 Background .....	1
1.2 Significance of the problem .....	2
1.3 Objective of the study .....	2
1.4 Hypothesis.....	2
1.5 Operational Definitions.....	3
1.6 Assumptions.....	4
CHAPTER 2.....	5
2 Review of Literature.....	5
CHAPTER 3.....	6
3 Methods and Materials.....	<b>Error! Bookmark not defined.</b>
3.1 Research Design and Settings .....	6
3.2 Inclusion Criteria .....	6
3.3 Exclusion Criteria.....	7
3.4 Sampling Technique .....	7
3.5 Study Duration .....	8
3.6 Sample size estimation.....	8
3.7 Study Parameters.....	8
3.8 Ethical Considerations.....	9



3.9	Data Collection .....	9
3.10	Methadology .....	<b>Error! Bookmark not defined.</b>
3.11	Statistical Analysis .....	9
CHAPTER 4.....		11
4	Results .....	11
4.1	Frequency of Pharma .....	11
4.2	ABC.....	11
4.3	XYZ.....	11
CHAPTER 5.....		14
5	DISCUSSION.....	14
5.1	Limitations.....	14
5.2	Strength of Study .....	14
5.3	Weakness of Study .....	15
5.4	Conclusion .....	15
5.5	Recommendations .....	15
REFERENCES .....		16
Appendix-I PROFORMA.....		17
Appendix-II IRB Approval Letter.....		<b>Error! Bookmark not defined.</b>
Appendix-III Turnitin Digital Receipt .....		18
Appendix-IV Summary of the Similarity Index (Plagiarism) .....		19
Appendix-V.....		20

## LIST OF TABLES (if Any)

Table 4. 1 Frequency of Pharma .....	11
Table 4. 2 ABC .....	11
Table 4. 3 XYZ .....	11

**LIST OF FIGURES (if Any)**

Figure 4. 1 DEF .....12

Figure 4. 2 GHI.....12

Figure 4. 3 JKL.....13

Figure 4. 4.....13

LIST OF SYMBOLS (if Any)

### LIST OF ABBREVIATIONS (if Any)

CHK	Civil Hospital Karachi
COPD	Chronic obstructive pulmonary Disease
DMC	Dow Medical College
WHO	World Health Organization

## ABSTRACT

**Background:**

**Objectives:**

**Methods:**

**Results:**

**Conclusion:**

*Key Words: Anthracosis, histomorphology, etc..*

## **CHAPTER 1**

(The Paragraph and line spacing should be of 1.5. Font: Calibri. Font Size: 12, for heading: 12 (bold), for chapter name 14 (bold). Layout: Justified (throughout the report).

The content/headings of all chapters are to be determined by the student and supervisor based on the type/nature of the study underway)

### **1 INTRODUCTION**

#### **1.1 Background**

Video provides a powerful way to help you prove your point. When you click Online Video, you can paste in the embed code for the video you want to add. You can also type a keyword to search online for the video that best fits your document.

To make your document look professionally produced, Word provides header, footer, cover page, and text box designs that complement each other. For example, you can add a matching cover page, header, and sidebar. Click Insert and then choose the elements you want from the different galleries.

Themes and styles also help keep your document coordinated. When you click Design and choose a new Theme, the pictures, charts, and SmartArt graphics change to match your new theme. When you apply styles, your headings change to match the new theme.

Save time in Word with new buttons that show up where you need them. To change the way a picture fits in your document, click it and a button for layout options appears next to it. When you work on a table, click where you want to add a row or a column, and then click the plus sign.

Reading is easier, too, in the new Reading view. You can collapse parts of the document and focus on the text you want. If you need to stop reading before you reach the end, Word remembers where you left off - even on another device.

## **1.2 Significance of the problem**

Video provides a powerful way to help you prove your point. When you click Online Video, you can paste in the embed code for the video you want to add. You can also type a keyword to search online for the video that best fits your document.

To make your document look professionally produced, Word provides header, footer, cover page, and text box designs that complement each other. For example, you can add a matching cover page, header, and sidebar. Click Insert and then choose the elements you want from

## **1.3 Objective of the study**

Video provides a powerful way to help you prove your point. When you click Online Video, you can paste in the embed code for the video you want to add. You can also type a keyword to search online for the video that best fits your document.

To make your document look professionally produced, Word provides header, footer, cover page, and text box designs that complement each other. For example, you can add a matching cover page, header, and sidebar. Click Insert and then choose the elements you want from the different galleries.

Themes and styles also help keep your document coordinated. When you click Design and choose a new Theme, the pictures, charts, and SmartArt graphics change to match your new theme. When you apply styles, your headings change to match the new theme.

Save time in Word with new buttons that show up where you need them. To change the way a picture fits in your document, click it and a button for layout options appears next to it. When you work on a table, click where you want to add a row or a column, and then click the plus sign.

Reading is easier, too, in the new Reading view. You can collapse parts of the document and focus on the text you want. If you need to stop reading before you reach the end, Word remembers where you left off - even on another device.

## **1.4 Hypothesis**

Video provides a powerful way to help you prove your point. When you click Online Video, you can paste in the embed code for the video you want to add. You can also type a keyword to search online for the video that best fits your document.



To make your document look professionally produced, Word provides header, footer, cover page, and text box designs that complement each other. For example, you can add a matching cover page, header, and sidebar. Click Insert and then choose the elements you want from the different galleries.

Themes and styles also help keep your document coordinated. When you click Design and choose a new Theme, the pictures, charts, and SmartArt graphics change to match your new theme. When you apply styles, your headings change to match the new theme.

Save time in Word with new buttons that show up where you need them. To change the way a picture fits in your document, click it and a button for layout options appears next to it. When you work on a table, click where you want to add a row or a column, and then click the plus sign.

Reading is easier, too, in the new Reading view. You can collapse parts of the document and focus on the text you want. If you need to stop reading before you reach the end, Word remembers where you left off - even on another device.

## **1.5 Operational Definitions**

Video provides a powerful way to help you prove your point. When you click Online Video, you can paste in the embed code for the video you want to add. You can also type a keyword to search online for the video that best fits your document.

To make your document look professionally produced, Word provides header, footer, cover page, and text box designs that complement each other. For example, you can add a matching cover page, header, and sidebar. Click Insert and then choose the elements you want from the different galleries.

Themes and styles also help keep your document coordinated. When you click Design and choose a new Theme, the pictures, charts, and SmartArt graphics change to match your new theme. When you apply styles, your headings change to match the new theme.

Save time in Word with new buttons that show up where you need them. To change the way a picture fits in your document, click it and a button for layout options appears next to it. When you work on a table, click where you want to add a row or a column, and then click the plus sign.

## 1.6 Assumptions

Video provides a powerful way to help you prove your point. When you click Online Video, you can paste in the embed code for the video you want to add. You can also type a keyword to search online for the video that best fits your document.

To make your document look professionally produced, Word provides header, footer, cover page, and text box designs that complement each other. For example, you can add a matching cover page, header, and sidebar. Click Insert and then choose the elements you want from the different galleries

## CHAPTER 2

### 2 Review of Literature

Video provides a powerful way to help you prove your point. When you click Online Video, you can paste in the embed code for the video you want to add. You can also type a keyword to search online for the video that best fits your document.

To make your document look professionally produced, Word provides header, footer, cover page, and text box designs that complement each other. For example, you can add a matching cover page, header, and sidebar. Click Insert and then choose the elements you want from the different galleries.

Themes and styles also help keep your document coordinated. When you click Design and choose a new Theme, the pictures, charts, and SmartArt graphics change to match your new theme. When you apply styles, your headings change to match the new theme.

Save time in Word with new buttons that show up where you need them. To change the way a picture fits in your document, click it and a button for layout options appears next to it. When you work on a table, click where you want to add a row or a column, and then click the plus sign.

## CHAPTER 3

### 3 Research Methodology

(Note: The contents/headings of this chapter are to be determined by the student and supervisor based on the type/nature of study underway.)

#### 3.1 Research Design and Settings

Video provides a powerful way to help you prove your point. When you click Online Video, you can paste in the embed code for the video you want to add. You can also type a keyword to search online for the video that best fits your document.

To make your document look professionally produced, Word provides header, footer, cover page, and text box designs that complement each other. For example, you can add a matching cover page, header, and sidebar. Click Insert and then choose the elements you want from the different galleries.

Themes and styles also help keep your document coordinated. When you click Design and choose a new Theme, the pictures, charts, and SmartArt graphics change to match your new theme. When you apply styles, your headings change to match the new theme.

Save time in Word with new buttons that show up where you need them. To change the way a picture fits in your document, click it and a button for layout options appears next to it. When you work on a table, click where you want to add a row or a column, and then click the plus sign.

#### 3.2 Inclusion Criteria

Video provides a powerful way to help you prove your point. When you click Online Video, you can paste in the embed code for the video you want to add. You can also type a keyword to search online for the video that best fits your document.

To make your document look professionally produced, Word provides header, footer, cover page, and text box designs that complement each other. For example, you can add a matching cover page, header, and sidebar. Click Insert and then choose the elements you want from the different galleries.

Themes and styles also help keep your document coordinated. When you click Design and choose a new Theme, the pictures, charts, and SmartArt graphics change to match your new theme. When you apply styles, your headings change to match the new theme.

Save time in Word with new buttons that show up where you need them. To change the way a picture fits in your document, click it and a button for layout options appears next to it. When you work on a table, click where you want to add a row or a column, and then click the plus sign.

### **3.3 Exclusion Criteria**

Video provides a powerful way to help you prove your point. When you click Online Video, you can paste in the embed code for the video you want to add. You can also type a keyword to search online for the video that best fits your document.

To make your document look professionally produced, Word provides header, footer, cover page, and text box designs that complement each other. For example, you can add a matching cover page, header, and sidebar. Click Insert and then choose the elements you want from the different galleries.

Themes and styles also help keep your document coordinated. When you click Design and choose a new Theme, the pictures, charts, and SmartArt graphics change to match your new theme. When you apply styles, your headings change to match the new theme

### **3.4 Sampling Technique**

Video provides a powerful way to help you prove your point. When you click Online Video, you can paste in the embed code for the video you want to add. You can also type a keyword to search online for the video that best fits your document.

To make your document look professionally produced, Word provides header, footer, cover page, and text box designs that complement each other. For example, you can add a matching cover page, header, and sidebar. Click Insert and then choose the elements you want from the different galleries.

Themes and styles also help keep your document coordinated. When you click Design and choose a new Theme, the pictures, charts, and SmartArt graphics change to match your new theme. When you apply styles, your headings change to match the new theme

### **3.5 Study Duration**

Video provides a powerful way to help you prove your point. When you click Online Video, you can paste in the embed code for the video you want to add. You can also type a keyword to search online for the video that best fits your document.

To make your document look professionally produced, Word provides header, footer, cover page, and text box designs that complement each other. For example, you can add a matching cover page, header, and sidebar. Click Insert and then choose the elements you want from the different galleries.

Themes and styles also help keep your document coordinated. When you click Design and choose a new Theme, the pictures, charts, and SmartArt graphics change to match your new theme. When you apply styles, your headings change to match the new theme

### **3.6 Sample size estimation**

Video provides a powerful way to help you prove your point. When you click Online Video, you can paste in the embed code for the video you want to add. You can also type a keyword to search online for the video that best fits your document.

To make your document look professionally produced, Word provides header, footer, cover page, and text box designs that complement each other. For example, you can add a matching cover page, header, and sidebar. Click Insert and then choose the elements you want from the different galleries.

Themes and styles also help keep your document coordinated. When you click Design and choose a new Theme, the pictures, charts, and SmartArt graphics change to match your new theme. When you apply styles, your headings change to match the new theme.

### **3.7 Study Parameters**

Video provides a powerful way to help you prove your point. When you click Online Video, you can paste in the embed code for the video you want to add. You can also type a keyword to search online for the video that best fits your document.

To make your document look professionally produced, Word provides header, footer, cover page, and text box designs that complement each other. For example, you can add a matching cover page, header, and sidebar. Click Insert and then choose the elements you want from the different galleries.

Themes and styles also help keep your document coordinated. When you click Design and choose a new Theme, the pictures, charts, and SmartArt graphics change to match your new theme. When you apply styles, your headings change to match the new theme.

### **3.8 Ethical Considerations**

Video provides a powerful way to help you prove your point. When you click Online Video, you can paste in the embed code for the video you want to add. You can also type a keyword to search online for the video that best fits your document.

To make your document look professionally produced, Word provides header, footer, cover page, and text box designs that complement each other. For example, you can add a matching cover page, header, and sidebar. Click Insert and then choose the elements you want from the different galleries.

Themes and styles also help keep your document coordinated. When you click Design and choose a new Theme, the pictures, charts, and SmartArt graphics change to match your new theme. When you apply styles, your headings change to match the new theme.

### **3.9 Data Collection**

Video provides a powerful way to help you prove your point. When you click Online Video, you can paste in the embed code for the video you want to add. You can also type a keyword to search online for the video that best fits your document.

To make your document look professionally produced, Word provides header, footer, cover page, and text box designs that complement each other. For example, you can add a matching cover page, header, and sidebar. Click Insert and then choose the elements you want from the different galleries.

Themes and styles also help keep your document coordinated. When you click Design and choose a new Theme, the pictures, charts, and SmartArt graphics change to match your new theme. When you apply styles, your headings change to match the new theme.

### **3.10 Statistical Analysis**

"In this section you have to write about which statistical model / technique (Test) you have applied and your data follows normal distribution or not.

For inter group comparison / association which post-hoc or parametric / non-parametric test you have applied.  
How did you present your work in Chapter 4 results section whether made chart/figures or Frequency tables, or Mean, Standard deviation, Confidence Interval?"



## CHAPTER 4

### 4 Results

#### 4.1 Frequency of Pharma

Video provides a powerful way to help you prove your point. When you click Online Video, you can paste in the embed code for the video you want to add. You can also type a keyword to search online for the video that best fits your document.

**Table 4. 1 Frequency of Pharma**

	D	F
A	54	65
C	12	32

#### 4.2 ABC

Video provides a powerful way to help you prove your point. When you click Online Video, you can paste in the embed code for the video you want to add. You can also type a keyword to search online for the video that best fits your document.

**Table 4. 2 ABC**

	D	F
A	54	65
C	12	32

#### 4.3 XYZ

Video provides a powerful way to help you prove your point. When you click Online Video, you can paste in the embed code for the video you want to add. You can also type a keyword

**Table 4. 3 XYZ**

	D	F
A	54	65
C	12	32

Figure 4. 1 DEF

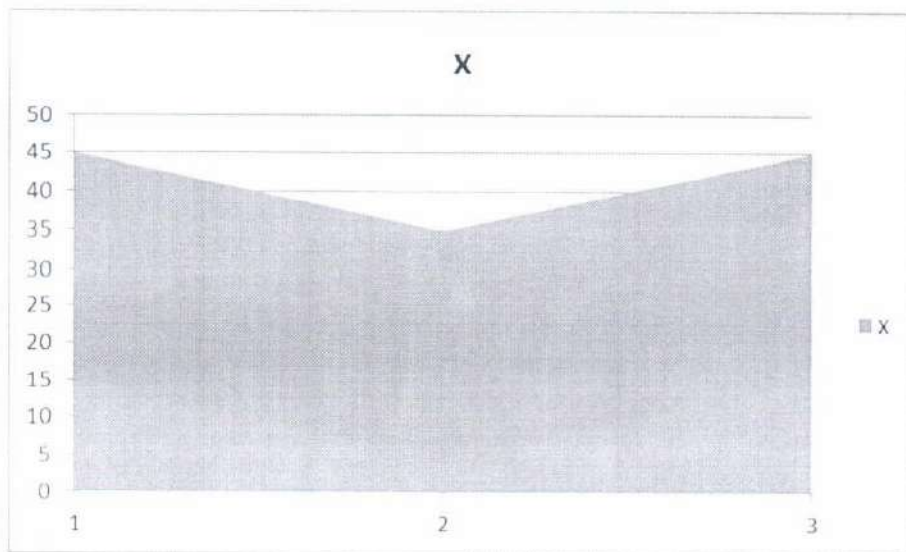


Figure 4. 2 GHI

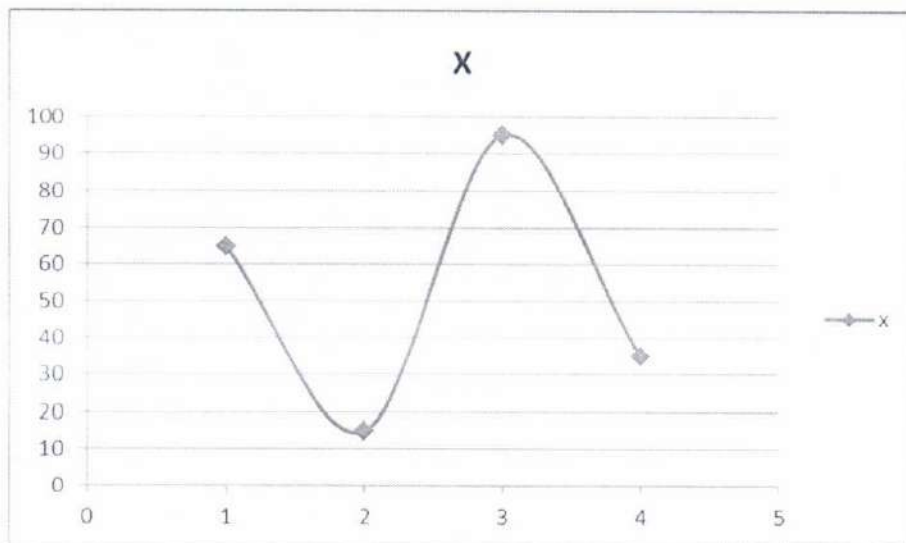


Figure 4. 3 JKL

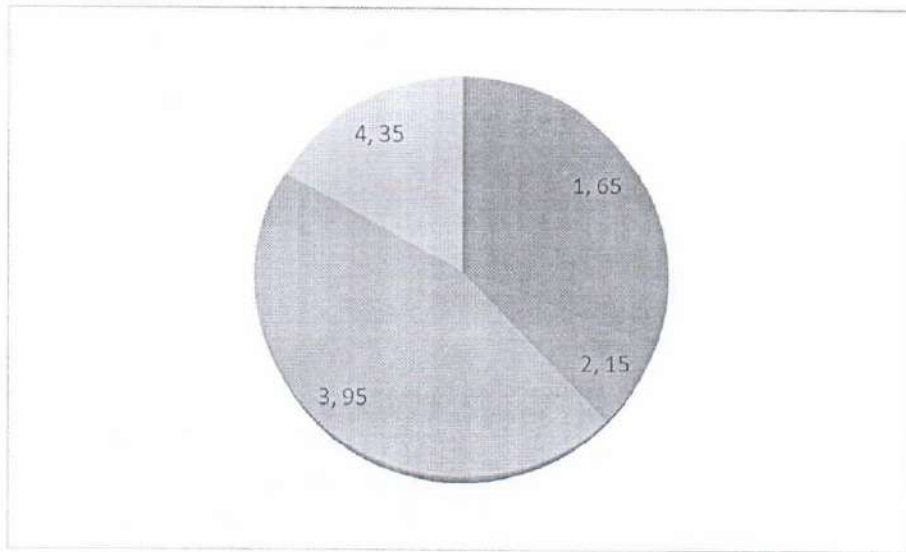
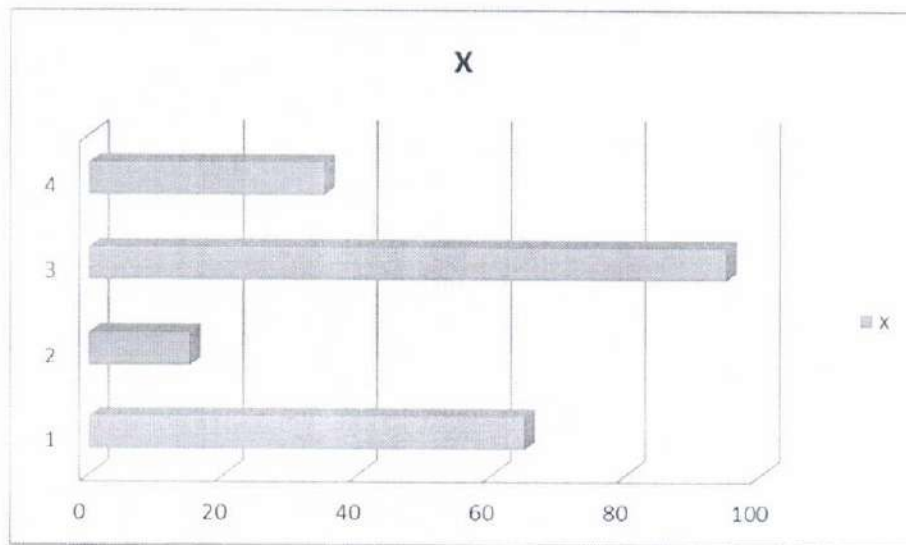


Figure 4. 4



## CHAPTER 5

### 5 DISCUSSION

#### 5.1 Limitations

Video provides a powerful way to help you prove your point. When you click Online Video, you can paste in the embed code for the video you want to add. You can also type a keyword to search online for the video that best fits your document.

To make your document look professionally produced, Word provides header, footer, cover page, and text box designs that complement each other. For example, you can add a matching cover page, header, and sidebar. Click Insert and then choose the elements you want from the different galleries.

Themes and styles also help keep your document coordinated. When you click Design and choose a new Theme, the pictures, charts, and SmartArt graphics change to match your new theme. When you apply styles, your headings change to match the new theme.

#### 5.2 Strength of Study

Video provides a powerful way to help you prove your point. When you click Online Video, you can paste in the embed code for the video you want to add. You can also type a keyword to search online for the video that best fits your document.

To make your document look professionally produced, Word provides header, footer, cover page, and text box designs that complement each other. For example, you can add a matching cover page, header, and sidebar. Click Insert and then choose the elements you want from the different galleries.

Themes and styles also help keep your document coordinated. When you click Design and choose a new Theme, the pictures, charts, and SmartArt graphics change to match your new theme. When you apply styles, your headings change to match the new theme.

### **5.3 Weakness of Study**

Video provides a powerful way to help you prove your point. When you click Online Video, you can paste in the embed code for the video you want to add. You can also type a keyword to search online for the video that best fits your document.

To make your document look professionally produced, Word provides header, footer, cover page, and text box designs that complement each other. For example, you can add a matching cover page, header, and sidebar. Click Insert and then choose the elements you want from the different galleries.

Themes and styles also help keep your document coordinated. When you click Design and choose a new Theme, the pictures, charts, and SmartArt graphics change to match your new theme. When you apply styles, your headings change to match the new theme.

### **5.4 Conclusion**

Video provides a powerful way to help you prove your point. When you click Online Video, you can paste in the embed code for the video you want to add. You can also type a keyword to search online for the video that best fits your document.

To make your document look professionally produced, Word provides header, footer, cover page, and text box designs that complement each other. For example, you can add a matching cover page, header, and sidebar. Click Insert and then choose the elements you want from the different galleries.

Themes and styles also help keep your document coordinated. When you click Design and choose a new Theme, the pictures, charts, and SmartArt graphics change to match your new theme. When you apply styles, your headings change to match the new theme.

### **5.5 Recommendations**

Video provides a powerful way to help you prove your point. When you click Online Video, you can paste in the embed code for the video you want to add. You can also type a keyword to search online for the video that best fits your document.

To make your document look professionally produced, Word provides header, footer, cover page, and text box designs that complement each other. For example, you can add a

## REFERENCES

The APA-6 referencing style is to be followed.

- Ariffin, N.A.b.N., Ismail, A.b., Abdul Kadir, I.K., & Kamal, J.I.A. (2018).  
Implementation of electronic medical records in developing countries:  
Challenges & barriers. *International Journal of Academic Research in  
Progressive Education and Development*, 7(3), 187-199.

## Appendix-I PROFORMA

## Appendix-II Turnitin Digital Receipt



### Digital Receipt

This receipt acknowledges that Turnitin received your paper. Below you will find the receipt information regarding your submission.

The first page of your submissions is displayed below.

Submission author:	
Assignment title:	
Submission title:	
File name:	
File size:	694.48K
Page count:	186
Word count:	40,416
Character count:	224,153
Submission date:	08-Feb-2017 11:43PM
Submission ID:	768660872



## Appendix-III Summary of the Similarity Index (Plagiarism)

### KAP Hep-B

#### ORIGINALITY REPORT

8%

SIMILARITY INDEX

3%

INTERNET SOURCES

6%

PUBLICATIONS

%

STUDENT PAPERS

#### PRIMARY SOURCES

1	ul Haq, Noman, Mohamed Hassali, Asrul A Shafie, Fahad Saleem, Maryam Farooqui, and Hisham Aljadhey. "A cross sectional assessment of knowledge, attitude and practice towards Hepatitis B among healthy population of Quetta, Pakistan", BMC Public Health, 2012. Publication	1%
2	www.pmrc.org.pk Internet Source	1%
3	asscat-hepatitis.org Internet Source	1%
4	Mesfin, Yonatan Moges, and Kelemu Tilahun Kibret. "Assessment of Knowledge and Practice towards Hepatitis B among Medical and Health Science Students in Haramaya University, Ethiopia", PLoS ONE, 2013. Publication	<1%
5	Askarian, M.. "Knowledge, attitude, and practice toward contact isolation precautions among medical students in Shiraz, Iran", AJIC: American Journal of Infection Control,	<1%

Appendix-IV

Etc....

"Title"

A RESEARCH PROJECT

Submitted to the Board of Advanced Studies and Research

Dow University of Health Sciences

In partial fulfillment of the requirement

for the degree of

Master of Business Administration

(Health Management)

by

Dr. ABC

Insert your Institute  
Monogram

Program Name And  
Institute name



Institute of Health Management

Dow University of Health Sciences

Karachi-Pakistan

February 2015

SUPERVISOR

Dr. MUHAMMAD ATHAR MAJEED KHAN

DPH, DCPS-HCSM, DCPS-HPE, MBA DUHS-HM

## DEDICATION

I dedicate my work to.....

My late parents, for their unconditional love, untiring efforts and constant prayers  
for making me what I am today.....

## ACKNOWLEDGEMENTS

I thank my Allah for his blessings and support so that I could complete my work amicably.

When I write this acknowledgement, a lot of names keep on pouring into my mind who have made my otherwise tedious journey easier.

I would like to start with late Dr. ABC who has always guided and supported me.

.....

## DECLARATION

*"I hereby declare that this submission is my own work & that, to the best of my knowledge & belief, it contains no material previously published or written by another person nor material which has been accepted for the award of any other degree or diploma of the university or other institute of higher learning, except where due acknowledgement has been made in the text".*

**Dr. ABC**

MPhil Trainee/Research Associate of Anatomy

Dow University of Health Sciences

*Signature* \_\_\_\_\_

Enrolment No. 07/2005/003

Date: 26<sup>th</sup> August, 2016

## CERTIFICATE

This is to certify that the project entitled "**ABC Title**" submitted by Dr. ABC to the Institute of Basic Medical Sciences, Dow University of Health Sciences, Karachi for the award of the degree of Master of Philosophy (Anatomy), is a bonafide record of the research work carried out by him under my supervision and guidance. The content of the project, in full or parts have not been submitted to any other Institute or University for the award of any other degree or diploma.

**Supervisor:**

Dr. ABC,  
Qualification  
Designation  
Department name  
Institute of Health Management,  
DUHS, Karachi

Date: 26<sup>th</sup> August, 2016

## CERTIFICATE

This is to certify that the project entitled "**ABC Title**" submitted by Dr. ABC to the **Institute of Basic Medical Sciences, Dow University of Health Sciences, Karachi** for the award of the degree of **Master of Philosophy (Anatomy)**, is a **bonafide** record of the research work carried out by him under my supervision and guidance. The content of the project, in full or parts have not been submitted to any other Institute or University for the award of any other degree or diploma.

**Co-Supervisor:**

**Dr. ABC,**  
**Qualification**  
**Designation**  
**Department name**  
**Institute of Health Management,**  
**DUHS, Karachi**

**Date: 26<sup>th</sup> August, 2016**



## CERTIFICATE

This is to certify that the project entitled "**ABC Title**" submitted by Dr. ABC to the Institute of Basic Medical Sciences, Dow University of Health Sciences, Karachi for the award of the degree of Master of Philosophy (Anatomy), is a bonafide record of the research work carried out by him under my supervision and guidance. The content of the project, in full or parts have not been submitted to any other Institute or University for the award of any other degree or diploma.

**MPhil Program Director:**

Dr. ABC,  
Qualification  
Designation  
Department name  
Institute of Health Management,  
DUHS, Karachi

Date: 26<sup>th</sup> August, 2016

## TABLE OF CONTENTS

ABSTRACT.....	i
Background .....	i
Objectives.....	i
Methods.....	i
Results.....	i
Conclusion.....	i
CHAPTER 1.....	1
1    INTRODUCTION .....	1
1.1    Background .....	1
1.2    Significance of the problem .....	1
1.3    Objective of the study.....	2
1.4    Hypothesis.....	2
1.5    Operational Definitions.....	3
1.6    Assumptions.....	3
CHAPTER 2.....	4
2    Review of Literature.....	4
CHAPTER 3.....	5
3    Methods and Materials.....	5
3.1    Research Design and Settings .....	5
3.2    Inclusion Criteria .....	5
3.3    Exclusion Criteria.....	6
3.4    Sampling Technique .....	6
3.5    Study Duration .....	6
3.6    Sample size estimation.....	7
3.7    Study Parameters.....	7
3.8    Ethical Considerations.....	8

3.9	Data Collection .....	8
3.10	Methodology .....	8
3.11	Statistical Analysis .....	9
CHAPTER 4.....		10
4	Results .....	10
4.1	Frequency of Pharma .....	10
4.2	ABC .....	10
4.3	XYZ.....	10
CHAPTER 5.....		13
5	DISCUSSION.....	13
5.1	Limitations.....	13
5.2	Strength of Study .....	13
5.3	Weakness of Study.....	14
5.4	Conclusion .....	14
5.5	Recommendations .....	14
REFERENCES .....		15
Appendix-I PROFORMA.....		16
Appendix-II IRB Approval Letter.....		17
Appendix-III Turnitin Digital Receipt .....		18
Appendix-IV Summary of the Similarity Index (Plagiarism) .....		19
Appendix-V.....		20

**Overall Minimum Project should be off 50/60 Pages**

## LIST OF TABLES (if Any)

Table 4. 1 Frequency of Pharma .....	10
Table 4. 2 ABC .....	10
Table 4. 3 XYZ .....	10

**LIST OF FIGURES (if Any)**

Figure 4. 1 DEF .....11

Figure 4. 2 GHI.....11

Figure 4. 3 JKL.....12

Figure 4. 4.....12

LIST OF SYMBOLS (if Any)

### LIST OF ABBREVIATIONS (if Any)

CHK	Civil Hospital Karachi
COPD	Chronic obstructive pulmonary Disease
DMC	Dow Medical College
WHO	World Health Organization

## ABSTRACT

**Background:**

**Objectives:**

**Methods:**

**Results:**

**Conclusion:**

*Key Words: Anthracosis, histomorphology, etc..*



## CHAPTER 1

(The Paragraph and line spacing should be of 1.5)

### 1 INTRODUCTION

#### 1.1 Background

Video provides a powerful way to help you prove your point. When you click Online Video, you can paste in the embed code for the video you want to add. You can also type a keyword to search online for the video that best fits your document.

To make your document look professionally produced, Word provides header, footer, cover page, and text box designs that complement each other. For example, you can add a matching cover page, header, and sidebar. Click Insert and then choose the elements you want from the different galleries.

Themes and styles also help keep your document coordinated. When you click Design and choose a new Theme, the pictures, charts, and SmartArt graphics change to match your new theme. When you apply styles, your headings change to match the new theme.

Save time in Word with new buttons that show up where you need them. To change the way a picture fits in your document, click it and a button for layout options appears next to it. When you work on a table, click where you want to add a row or a column, and then click the plus sign.

Reading is easier, too, in the new Reading view. You can collapse parts of the document and focus on the text you want. If you need to stop reading before you reach the end, Word remembers where you left off - even on another device.

#### 1.2 Significance of the problem

Video provides a powerful way to help you prove your point. When you click Online Video, you can paste in the embed code for the video you want to add. You can also type a keyword to search online for the video that best fits your document.

To make your document look professionally produced, Word provides header, footer, cover page, and text box designs that complement each other. For example, you can add a matching cover page, header, and sidebar. Click Insert and then choose the elements you want from

### **1.3 Objective of the study**

Video provides a powerful way to help you prove your point. When you click Online Video, you can paste in the embed code for the video you want to add. You can also type a keyword to search online for the video that best fits your document.

To make your document look professionally produced, Word provides header, footer, cover page, and text box designs that complement each other. For example, you can add a matching cover page, header, and sidebar. Click Insert and then choose the elements you want from the different galleries.

Themes and styles also help keep your document coordinated. When you click Design and choose a new Theme, the pictures, charts, and SmartArt graphics change to match your new theme. When you apply styles, your headings change to match the new theme.

Save time in Word with new buttons that show up where you need them. To change the way a picture fits in your document, click it and a button for layout options appears next to it. When you work on a table, click where you want to add a row or a column, and then click the plus sign.

Reading is easier, too, in the new Reading view. You can collapse parts of the document and focus on the text you want. If you need to stop reading before you reach the end, Word remembers where you left off - even on another device.

### **1.4 Hypothesis**

Video provides a powerful way to help you prove your point. When you click Online Video, you can paste in the embed code for the video you want to add. You can also type a keyword to search online for the video that best fits your document.

To make your document look professionally produced, Word provides header, footer, cover page, and text box designs that complement each other. For example, you can add a matching cover page, header, and sidebar. Click Insert and then choose the elements you want from the different galleries.

Themes and styles also help keep your document coordinated. When you click Design and choose a new Theme, the pictures, charts, and SmartArt graphics change to match your new theme. When you apply styles, your headings change to match the new theme.

Save time in Word with new buttons that show up where you need them. To change the way a picture fits in your document, click it and a button for layout options appears next to it. When you work on a table, click where you want to add a row or a column, and then click the plus sign.

Reading is easier, too, in the new Reading view. You can collapse parts of the document and focus on the text you want. If you need to stop reading before you reach the end, Word remembers where you left off - even on another device.

## **1.5 Operational Definitions**

Video provides a powerful way to help you prove your point. When you click Online Video, you can paste in the embed code for the video you want to add. You can also type a keyword to search online for the video that best fits your document.

To make your document look professionally produced, Word provides header, footer, cover page, and text box designs that complement each other. For example, you can add a matching cover page, header, and sidebar. Click Insert and then choose the elements you want from the different galleries.

Themes and styles also help keep your document coordinated. When you click Design and choose a new Theme, the pictures, charts, and SmartArt graphics change to match your new theme. When you apply styles, your headings change to match the new theme.

Save time in Word with new buttons that show up where you need them. To change the way a picture fits in your document, click it and a button for layout options appears next to it. When you work on a table, click where you want to add a row or a column, and then click the plus sign.

## **1.6 Assumptions**

Video provides a powerful way to help you prove your point. When you click Online Video, you can paste in the embed code for the video you want to add. You can also type a keyword to search online for the video that best fits your document.

To make your document look professionally produced, Word provides header, footer, cover page, and text box designs that complement each other. For example, you can add a matching cover page, header, and sidebar. Click Insert and then choose the elements you want from the different galleries

## CHAPTER 2

### 2 Review of Literature

Video provides a powerful way to help you prove your point. When you click Online Video, you can paste in the embed code for the video you want to add. You can also type a keyword to search online for the video that best fits your document.

To make your document look professionally produced, Word provides header, footer, cover page, and text box designs that complement each other. For example, you can add a matching cover page, header, and sidebar. Click Insert and then choose the elements you want from the different galleries.

Themes and styles also help keep your document coordinated. When you click Design and choose a new Theme, the pictures, charts, and SmartArt graphics change to match your new theme. When you apply styles, your headings change to match the new theme.

Save time in Word with new buttons that show up where you need them. To change the way a picture fits in your document, click it and a button for layout options appears next to it. When you work on a table, click where you want to add a row or a column, and then click the plus sign.

## CHAPTER 3

### 3 Methods and Materials

#### 3.1 Research Design and Settings

Video provides a powerful way to help you prove your point. When you click Online Video, you can paste in the embed code for the video you want to add. You can also type a keyword to search online for the video that best fits your document.

To make your document look professionally produced, Word provides header, footer, cover page, and text box designs that complement each other. For example, you can add a matching cover page, header, and sidebar. Click Insert and then choose the elements you want from the different galleries.

Themes and styles also help keep your document coordinated. When you click Design and choose a new Theme, the pictures, charts, and SmartArt graphics change to match your new theme. When you apply styles, your headings change to match the new theme.

Save time in Word with new buttons that show up where you need them. To change the way a picture fits in your document, click it and a button for layout options appears next to it. When you work on a table, click where you want to add a row or a column, and then click the plus sign.

#### 3.2 Inclusion Criteria

Video provides a powerful way to help you prove your point. When you click Online Video, you can paste in the embed code for the video you want to add. You can also type a keyword to search online for the video that best fits your document.

To make your document look professionally produced, Word provides header, footer, cover page, and text box designs that complement each other. For example, you can add a matching cover page, header, and sidebar. Click Insert and then choose the elements you want from the different galleries.

Themes and styles also help keep your document coordinated. When you click Design and choose a new Theme, the pictures, charts, and SmartArt graphics change to match your new theme. When you apply styles, your headings change to match the new theme.

Save time in Word with new buttons that show up where you need them. To change the way a picture fits in your document, click it and a button for layout options appears next to it. When you work on a table, click where you want to add a row or a column, and then click the plus sign.

### **3.3 Exclusion Criteria**

Video provides a powerful way to help you prove your point. When you click Online Video, you can paste in the embed code for the video you want to add. You can also type a keyword to search online for the video that best fits your document.

To make your document look professionally produced, Word provides header, footer, cover page, and text box designs that complement each other. For example, you can add a matching cover page, header, and sidebar. Click Insert and then choose the elements you want from the different galleries.

Themes and styles also help keep your document coordinated. When you click Design and choose a new Theme, the pictures, charts, and SmartArt graphics change to match your new theme. When you apply styles, your headings change to match the new theme

### **3.4 Sampling Technique**

Video provides a powerful way to help you prove your point. When you click Online Video, you can paste in the embed code for the video you want to add. You can also type a keyword to search online for the video that best fits your document.

To make your document look professionally produced, Word provides header, footer, cover page, and text box designs that complement each other. For example, you can add a matching cover page, header, and sidebar. Click Insert and then choose the elements you want from the different galleries.

Themes and styles also help keep your document coordinated. When you click Design and choose a new Theme, the pictures, charts, and SmartArt graphics change to match your new theme. When you apply styles, your headings change to match the new theme

### **3.5 Study Duration**

Video provides a powerful way to help you prove your point. When you click Online Video, you can paste in the embed code for the video you want to add. You can also type a keyword to search online for the video that best fits your document.

To make your document look professionally produced, Word provides header, footer, cover page, and text box designs that complement each other. For example, you can add a matching cover page, header, and sidebar. Click Insert and then choose the elements you want from the different galleries.

Themes and styles also help keep your document coordinated. When you click Design and choose a new Theme, the pictures, charts, and SmartArt graphics change to match your new theme. When you apply styles, your headings change to match the new theme

### **3.6 Sample size estimation**

Video provides a powerful way to help you prove your point. When you click Online Video, you can paste in the embed code for the video you want to add. You can also type a keyword to search online for the video that best fits your document.

To make your document look professionally produced, Word provides header, footer, cover page, and text box designs that complement each other. For example, you can add a matching cover page, header, and sidebar. Click Insert and then choose the elements you want from the different galleries.

Themes and styles also help keep your document coordinated. When you click Design and choose a new Theme, the pictures, charts, and SmartArt graphics change to match your new theme. When you apply styles, your headings change to match the new theme.

### **3.7 Study Parameters**

Video provides a powerful way to help you prove your point. When you click Online Video, you can paste in the embed code for the video you want to add. You can also type a keyword to search online for the video that best fits your document.

To make your document look professionally produced, Word provides header, footer, cover page, and text box designs that complement each other. For example, you can add a matching cover page, header, and sidebar. Click Insert and then choose the elements you want from the different galleries.

Themes and styles also help keep your document coordinated. When you click Design and choose a new Theme, the pictures, charts, and SmartArt graphics change to match your new theme. When you apply styles, your headings change to match the new theme.





Themes and styles also help keep your document coordinated. When you click Design and choose a new Theme, the pictures, charts, and SmartArt graphics change to match your new theme. When you apply styles, your headings change to match the new theme.

### **3.11 Statistical Analysis**

"In this section you have to write about which statistical model / technique (Test) you have applied and your data follows normal distribution or not.

For inter group comparison / association which post-hoc or parametric / non-parametric test you have applied.

How did you present your work in Chapter 4 results section whether made chart/figures or Frequency tables, or Mean, Standard deviation, Confidence Interval?"



Figure 4. 1 DEF

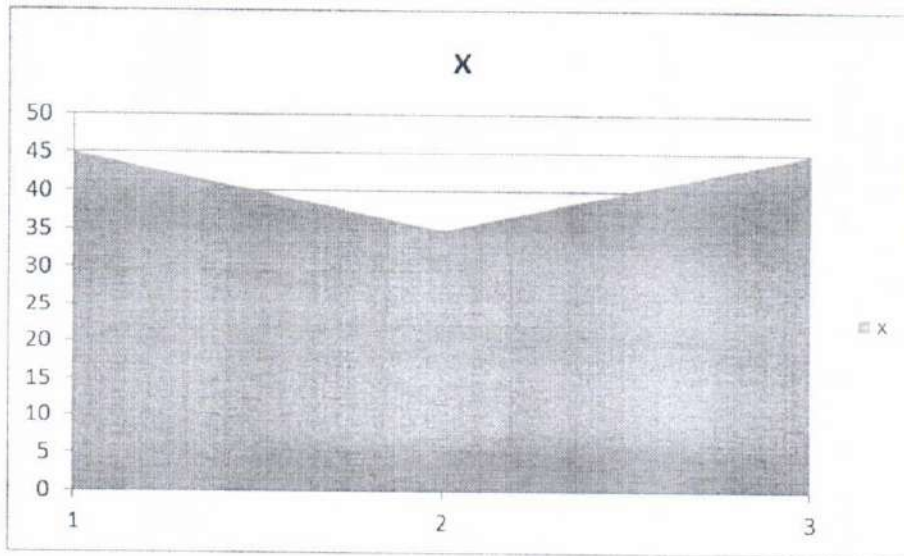


Figure 4. 2 GHI

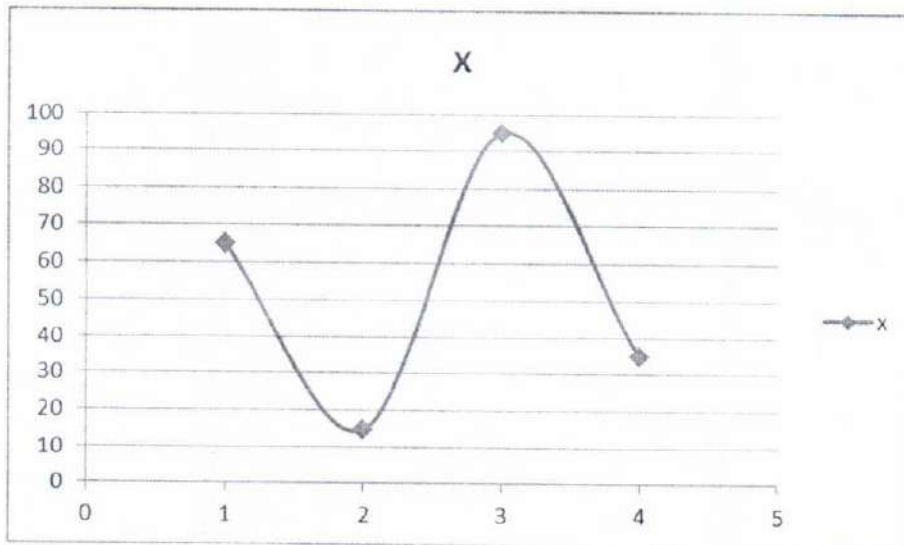


Figure 4. 3 JKL

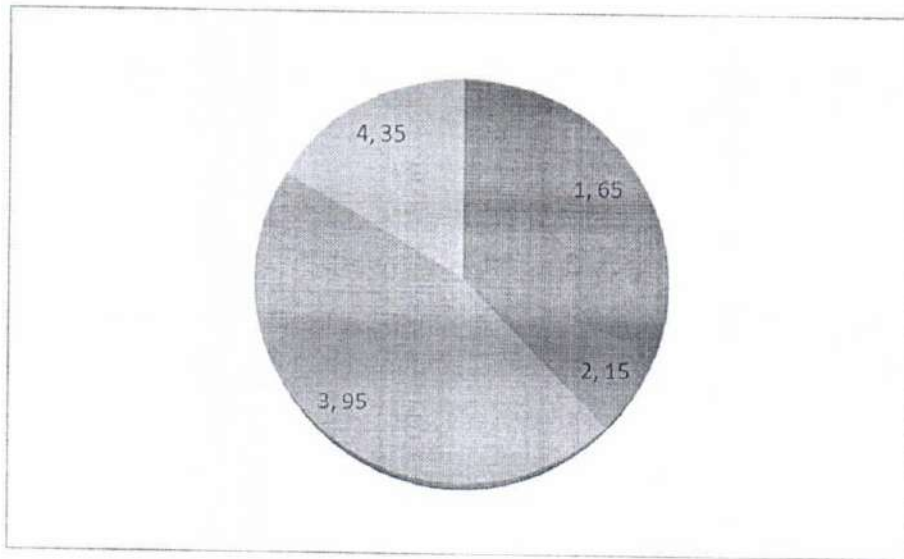
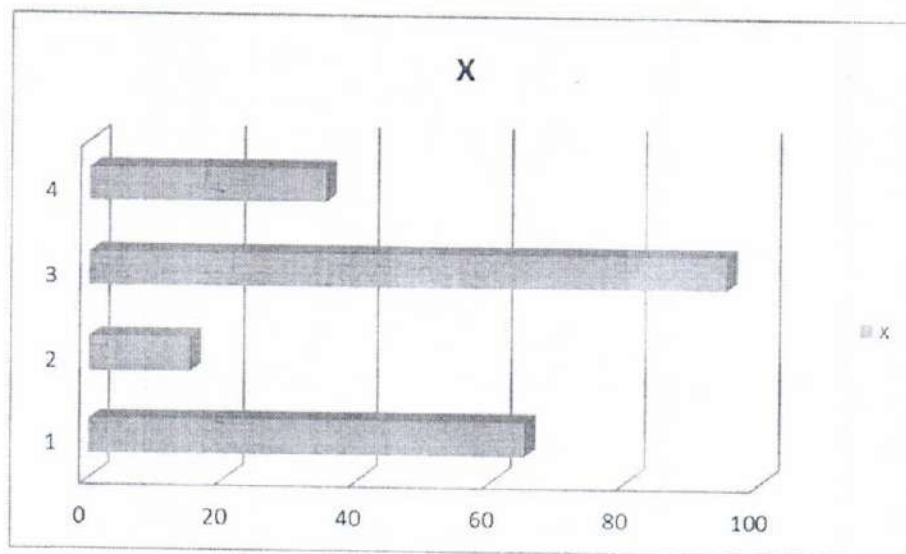


Figure 4. 4



## CHAPTER 5

### 5 DISCUSSION

#### 5.1 Limitations

Video provides a powerful way to help you prove your point. When you click Online Video, you can paste in the embed code for the video you want to add. You can also type a keyword to search online for the video that best fits your document.

To make your document look professionally produced, Word provides header, footer, cover page, and text box designs that complement each other. For example, you can add a matching cover page, header, and sidebar. Click Insert and then choose the elements you want from the different galleries.

Themes and styles also help keep your document coordinated. When you click Design and choose a new Theme, the pictures, charts, and SmartArt graphics change to match your new theme. When you apply styles, your headings change to match the new theme.

#### 5.2 Strength of Study

Video provides a powerful way to help you prove your point. When you click Online Video, you can paste in the embed code for the video you want to add. You can also type a keyword to search online for the video that best fits your document.

To make your document look professionally produced, Word provides header, footer, cover page, and text box designs that complement each other. For example, you can add a matching cover page, header, and sidebar. Click Insert and then choose the elements you want from the different galleries.

Themes and styles also help keep your document coordinated. When you click Design and choose a new Theme, the pictures, charts, and SmartArt graphics change to match your new theme. When you apply styles, your headings change to match the new theme.

### **5.3 Weakness of Study**

Video provides a powerful way to help you prove your point. When you click Online Video, you can paste in the embed code for the video you want to add. You can also type a keyword to search online for the video that best fits your document.

To make your document look professionally produced, Word provides header, footer, cover page, and text box designs that complement each other. For example, you can add a matching cover page, header, and sidebar. Click Insert and then choose the elements you want from the different galleries.

Themes and styles also help keep your document coordinated. When you click Design and choose a new Theme, the pictures, charts, and SmartArt graphics change to match your new theme. When you apply styles, your headings change to match the new theme.

### **5.4 Conclusion**

Video provides a powerful way to help you prove your point. When you click Online Video, you can paste in the embed code for the video you want to add. You can also type a keyword to search online for the video that best fits your document.

To make your document look professionally produced, Word provides header, footer, cover page, and text box designs that complement each other. For example, you can add a matching cover page, header, and sidebar. Click Insert and then choose the elements you want from the different galleries.

Themes and styles also help keep your document coordinated. When you click Design and choose a new Theme, the pictures, charts, and SmartArt graphics change to match your new theme. When you apply styles, your headings change to match the new theme.

### **5.5 Recommendations**

Video provides a powerful way to help you prove your point. When you click Online Video, you can paste in the embed code for the video you want to add. You can also type a keyword to search online for the video that best fits your document.

To make your document look professionally produced, Word provides header, footer, cover page, and text box designs that complement each other. For example, you can add a

## REFERENCES

The references should be write in **Vancouver Style**. (Suggest to use Endnote)

1. Mostafa Q Orbani, Masud Yunesian, Hamid Reza Baradaran. Indoor Smoke Exposure and Risk of Anthracosis. *Iran J Med Sci* 2014 Nov;39(6):571-76.

## Appendix-I PROFORMA



## Appendix-II IRB Approval Letter

## Appendix-III Turnitin Digital Receipt



### Digital Receipt

This receipt acknowledges that Turnitin received your paper. Below you will find the receipt information regarding your submission.

The first page of your submissions is displayed below.

Submission author:	
Assignment title:	
Submission title:	
File name:	
File size:	694.48K
Page count:	186
Word count:	40,416
Character count:	224,153
Submission date:	08-Feb-2017 11:43PM
Submission ID:	768660872

## Appendix-IV Summary of the Similarity Index (Plagiarism)

### KAP Hep-B

#### ORIGINALITY REPORT

<b>8%</b>	<b>3%</b>	<b>6%</b>	<b>%</b>
SIMILARITY INDEX	INTERNET SOURCES	PUBLICATIONS	STUDENT PAPERS

#### PRIMARY SOURCES

<b>1</b>	ul Haq, Noman, Mohamed Hassali, Asrul A Shafie, Fahad Saleem, Maryam Farooqui, and Hisham Aljadhey. "A cross sectional assessment of knowledge, attitude and practice towards Hepatitis B among healthy population of Quetta, Pakistan", BMC Public Health, 2012. Publication	<b>1%</b>
<b>2</b>	www.pmrc.org.pk Internet Source	<b>1%</b>
<b>3</b>	asscat-hepatitis.org Internet Source	<b>1%</b>
<b>4</b>	Mesfin, Yonatan Moges, and Kelemu Tilahun Kibret. "Assessment of Knowledge and Practice towards Hepatitis B among Medical and Health Science Students in Haramaya University, Ethiopia", PLoS ONE, 2013. Publication	<b>&lt;1%</b>
<b>5</b>	Askarian, M.. "Knowledge, attitude, and practice toward contact isolation precautions among medical students in Shiraz, Iran", AJIC: American Journal of Infection Control,	<b>&lt;1%</b>

Etc....

## Appendix-V